

I know a mass spec that swallowed a 🪰,



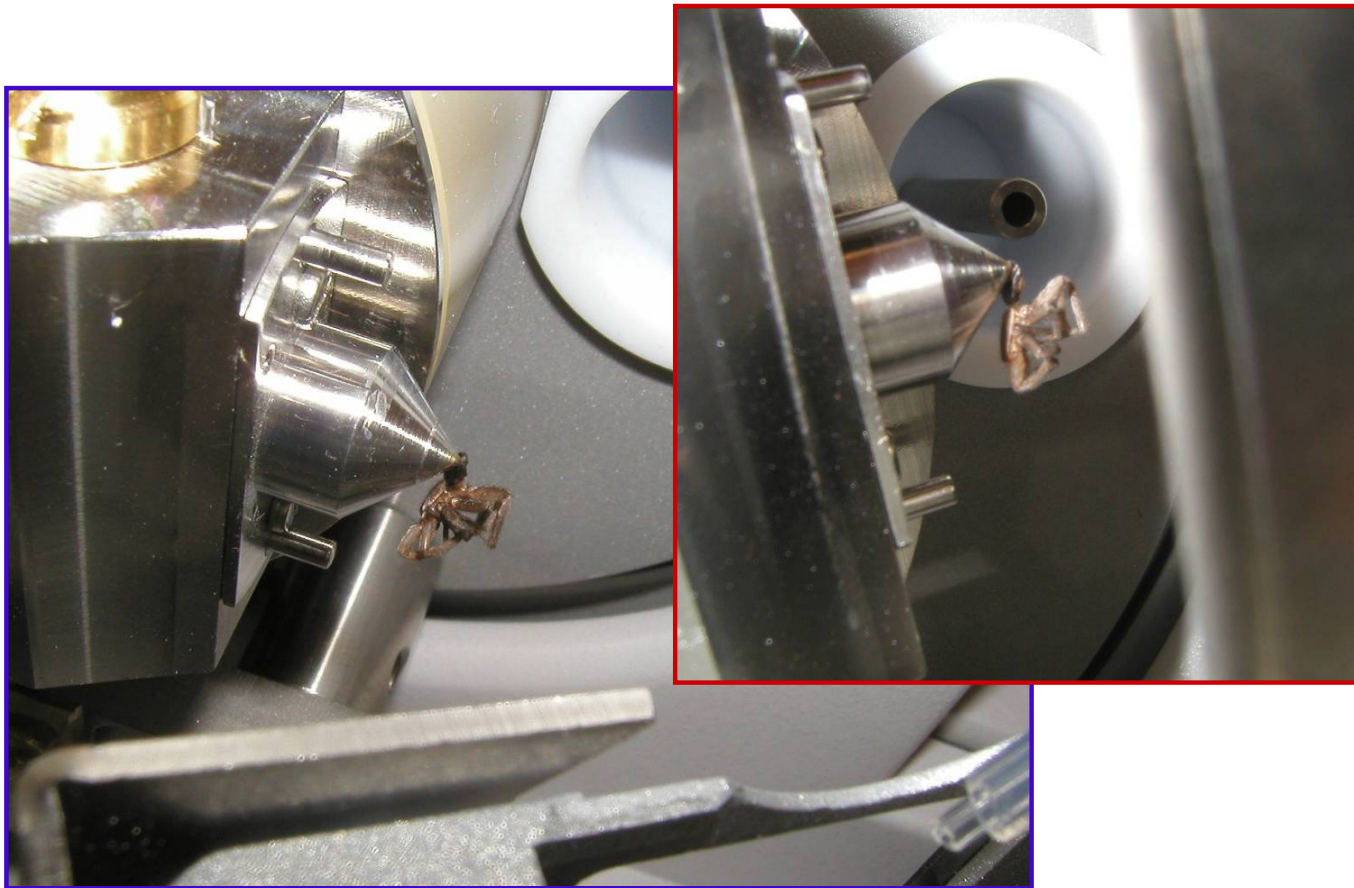
I do know why it swallowed the 🪰....

I know a mass spec that swallowed a spider,

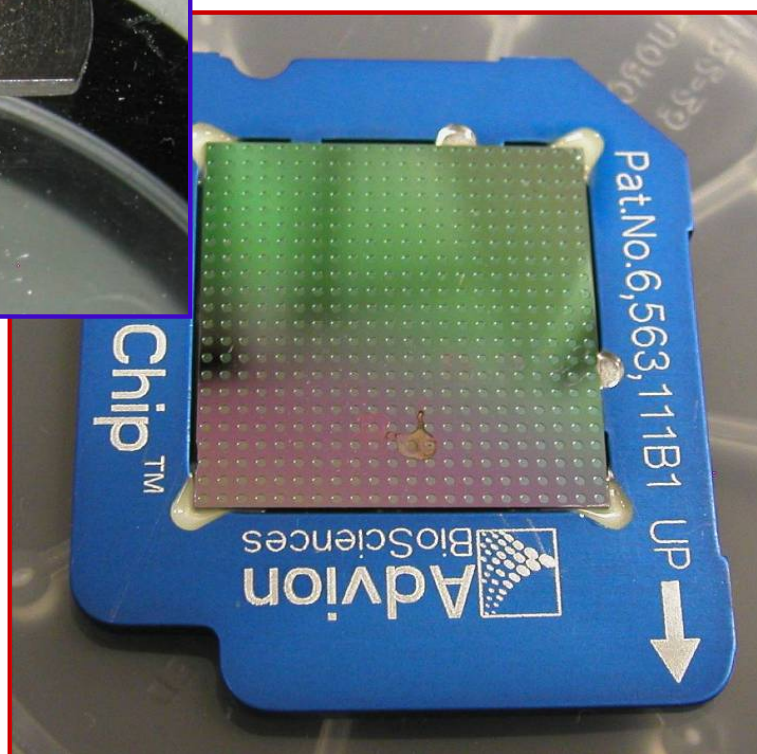


that wiggled and jiggled and tickled inside it,

It swallowed the spider to catch the 🪰,



I do know why it swallowed the 🪰...



...to do MS/MS on the fly!



<http://mass-spec.stanford.edu>

